

PALACIO DE LUCES

★ ★ ★ ★ ★

NORTE DE ESPAÑA & COSTA VERDE


MICHELIN
2025

“A palace surrounded by nature, open to the Cantabrian Sea, where the Asturian landscape, tranquillity and tradition come together to create an authentic, elegant experience.”

—
Michelin Guide



SMALL
LUXURY
HOTELS
OF THE WORLD

PALACIO DE LUCES

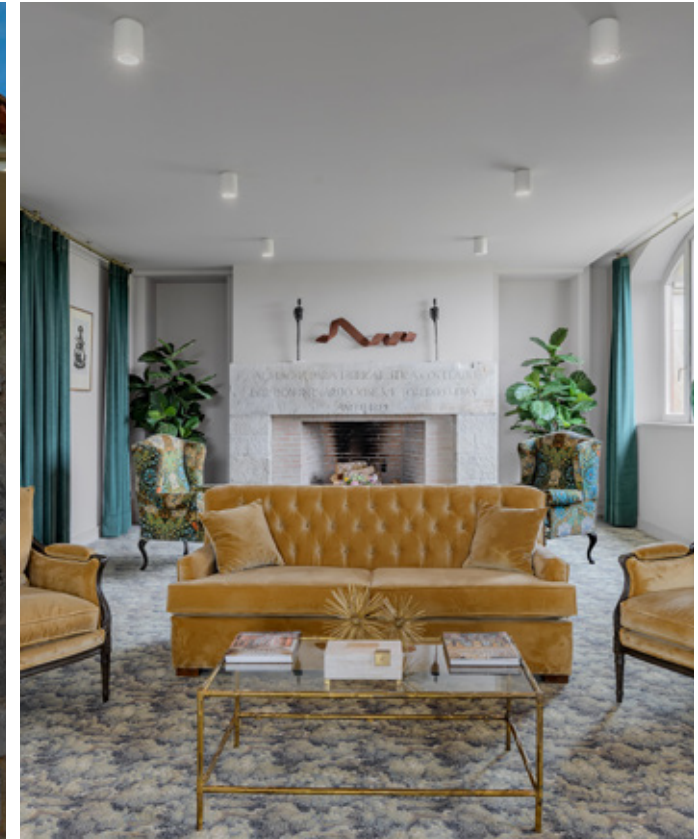


NORTE DE ESPAÑA & COSTA VERDE

In the charming fishing village of Lastres, between the Cantabrian Sea and the most authentic green landscapes of northern Spain, stands **Palacio de Luces**: a **16th-century** palace carefully restored and transformed into an **exclusive luxury retreat**.

Surrounded by more than 13,000 m² of gardens and nature, the hotel offers **44 rooms and suites** with views of the Sierra del Sueve and the **Picos de Europa**. The **Tella restaurant** pays tribute to its surroundings and to the Cantabrian Sea through cuisine rooted in Asturian tradition and local produce.



Palacio de Luces is also an **ideal setting** for meetings, celebrations and private events, thanks to its elegant indoor spaces, extensive gardens and a **wellbeing and experiences offering** that invites guests to discover the most authentic essence of the Costa Verde.



SPACES	CAPACITIES						CHARACTERISTICS		
	Imperial	U-shape	School	Theatre	Banquet	Cocktail	Area	Outdoor	Natural light
El Dorado	40	40	90	180	150	180	238 m ²	●	●
La Isla	16	14	20	40	30	40	50 m ²	●	●
Las Especies	40	40	100	200	-	200	264 m ²	●	●
Cayena	12	12	30	55	-	55	75 m ²	●	●
Vainilla	12	12	28	50	-	50	69 m ²	●	●
Azafrán	10	10	24	45	-	45	63 m ²	●	●

SERVICES

- Meetings and events coordinator
- Tailor-made gastronomic menus
- State-of-the-art technology
- Videoconferencing system
- Audiovisual equipment
- Complimentary Wi-Fi
- Ambience creation
- Space customisation
- On-site hotel parking

-  Area
-  Imperial
-  U-shape
-  School
-  Banquet
-  Theatre
-  Cocktail



El Dorado

238 m²

40 40 90 180 150 180

Natural light and high ceilings. A bright, open-plan space for large-scale celebrations or corporate events.

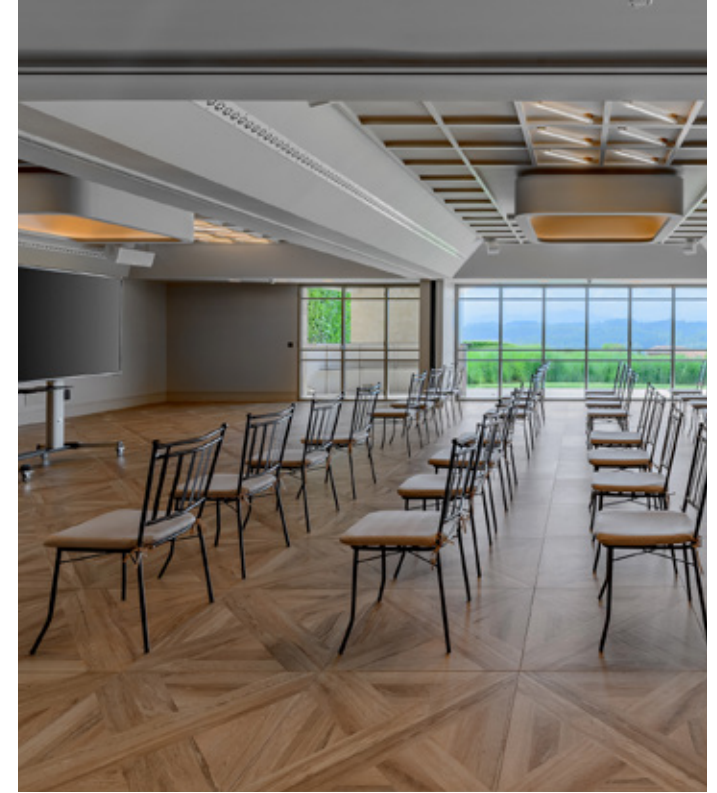


La Isla

50 m²

16 14 20 30 40 40

An elegant and light-filled setting for private gatherings, featuring an outdoor terrace and views over Lastres Bay.



Las Especies

264 m²

40 40 100 200 200

A spacious and versatile venue divided into three rooms: Cayena, Vainilla and Azafrán. Perfect for presentations and large-capacity cocktail events.

PALACIO DE LUCES



NORTE DE ESPAÑA & COSTA VERDE

INFORMATION AND CONTACT

Carretera AS257 s/n, 33330 Lastres, Asturias

palaciodeluces.com

Group and event bookings:

events@palaciodeluces.com

groups@palaciodeluces.com

Tel. (+34) 985 85 00 80